

Connecting
Communities

AusIMM connects members
from across 100 countries.
There are many ways to
engage and upskill with

EXHIBITION CATALOGUE

- 📍 31 Deeds Road, North Plympton, South Australia 5037
- ☎ +61 8 8350 2300
- ✉ adexpo@aeH.com.au
- 🌐 www.aeh.com.au

2026

Welcome to AEH



With a national reputation for outstanding service, AEH proudly delivers high-quality, contemporary products for all types of exhibitions including exhibition booths, furniture hire, custom-built displays, signage, and flooring.

What sets us apart is our unwavering commitment to exceeding client expectations. We bring together meticulous attention to detail, deep industry expertise, and a wide network of contacts to deliver seamless, end-to-end event solutions.

At the core of our business is a customer-first approach. We continually invest in our team of dedicated, experienced, and professional staff to ensure every exhibition we support is a success.

At AEH, we're also committed to reducing our environmental impact through smarter, greener choices across all aspects of our operations. These efforts contribute to more sustainable, environmentally responsible exhibitions adding value to your conference and peace of mind to your planning.

At AEH, we welcome the opportunity to partner with you to maximise the success of your exhibition or event.

We have an extensive range of exhibition and associated hire products combined with our dedicated teams across exhibitions, operations, signage, and custom design. We provide tailored solutions for events of all sizes.

We understand that the success of your event is the foundation of our partnership. That's why we work proactively, collaboratively, and flexibly to help you achieve your goals.

Contact us today to share your event vision and let's bring it to life, together.



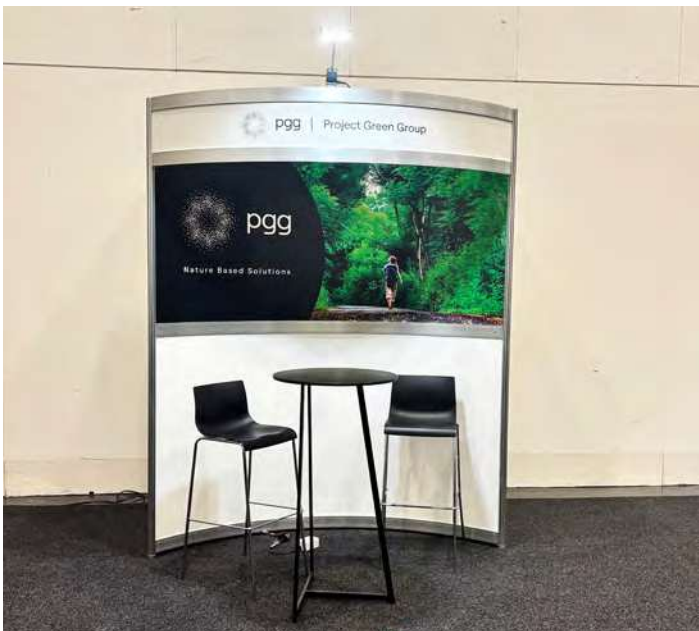
Contents

Exhibition booths & pods.....	4
Lounge areas & charging stations.....	6
Organiser features.....	8
Organiser signage.....	10
Upgrade packages.....	12
Signage.....	16
Furniture packages.....	17
Lounges & ottomans.....	18
Chairs & stools.....	20
Tables.....	22
Counters & feature counters.....	25
Accessories.....	26
Display solutions.....	27
Directional signage.....	28
Audiovisual.....	29
Electrical.....	29
Floor solutions & plants, pots & flowers	30
Terms & conditions.....	31

Exhibition booths & pods



Exhibition booths & pods



Lounge areas & charging stations



Lounge areas & charging stations



Organiser features



Organiser features



Organiser signage



Hanging banners

Directional signs

Floor & window decals



Organiser signage



Fabric banners

Portable signs

Outdoor signs



Upgrade packages

System based displays that stand out!

Fixed price, time saving and budget friendly

Inclusions

- 10 amp power and 4 way power board
- Lighting as shown
- Feature booth structure as illustrated
- Digital prints as shown
- Lockable storage in some- Please ask to confirm
- Installation and dismantle, damage waiver, delivery and collection of stand

Additional items

- Raised floor
- Audio visual
- Furniture and plants
- Damage waiver, delivery and collection applies to additional items only

If you would like to see a full colour 3D visual of your stand with your own artwork and furniture in place, this will attract a non-refundable \$700 design cost. Upgrade packages do not have the ability to be altered in structure. If you are interested in a customised stand, please contact our custom team at adexpo@ae.com.au to discuss your options. For further details or to see other configurations, please liaise with your coordinator to discuss your requirements.



Promote

3m x 3m corner
\$5,300 +GST



Promote

6m x 3m peninsula
\$7,000 +GST



Oceania

3m x 3m corner
\$6,100 +GST



Oceania

6m x 3m peninsula
\$8,400+GST

Upgrade packages

Backlit Graphics



Izzale
3m x 3m corner
\$7,000 +GST

Backlit Graphics



Izzale
6m x 3m peninsula
\$9,500 +GST

Backlit Graphics

NEW



Darre
3m x 3m corner
\$6,900 +GST

Backlit Graphics

NEW



Darre
6m x 3m peninsula
\$8,700 +GST



Excellent
3m x 3m corner
\$7,500 +GST



Excellent
6m x 3m peninsula
\$10,500 +GST

*Prices exclude GST, damage waiver, delivery or collection, and are for the duration of the exhibition, not exceeding 10 days, general hire not exceeding 7 days. Items are subject to availability. Adelaide Expo Hire reserves the right to change prices or our terms and conditions at any time. www.aeh.com.au

Upgrade packages



Prosper
3m x 3m corner
\$8,000 +GST



Prosper
6m x 3m peninsula
\$11,000 +GST



Apex
3m x 3m corner
\$9,850 +GST



Apex
6m x 3m peninsula
\$12,350 +GST



Eco
3m x 3m corner
\$9,500 +GST



Eco
6m x 3m peninsula
\$11,500 +GST

*Prices exclude GST, damage waiver, delivery or collection, and are for the duration of the exhibition, not exceeding 10 days, general hire not exceeding 7 days. Items are subject to availability. Adelaide Expo Hire reserves the right to change prices or our terms and conditions at any time. www.aeh.com.au

Upgrade packages



*Prices exclude GST, damage waiver, delivery or collection, and are for the duration of the exhibition, not exceeding 10 days, general hire not exceeding 7 days. Items are subject to availability. Adelaide Expo Hire reserves the right to change prices or our terms and conditions at any time. www.aeh.com.au

Signage



Panel Wall Graphics
3m x 3m corner
\$1,980



Fabric Wall Graphics
3m x 3m corner
\$2,830



Panel Wall Graphics
6m x 3m corner
\$2,970



Fabric Wall Graphics
6m x 3m corner
\$4,245



Lightbox Graphics
3m x 3m corner
\$3,500



Lightbox Graphics
6m x 3m corner
\$5,400



Furniture packages



Houghton Café Package

\$255 (normally \$316)

Code: TB2834PK

Colour Options Available



Houghton Bar Package

\$360 (normally \$450)

Code: TB2835PK

Colour Options Available



Summertown Ottoman Package

\$610 (normally \$760)

Code: LG0198PK

Colour Options Available



Burton Café Package

\$415 (normally \$520)

Code: TB2820PK

Colour Options Available



Beaumont Counter Package

\$430 (normally \$535)

Code: CT0835PK

Colour Options Available

Enhance option – counter signage (\$160)



NEW

Mylor Chair Package

\$605 (normally \$755)

Code: CH0135PK

Colour Options Available



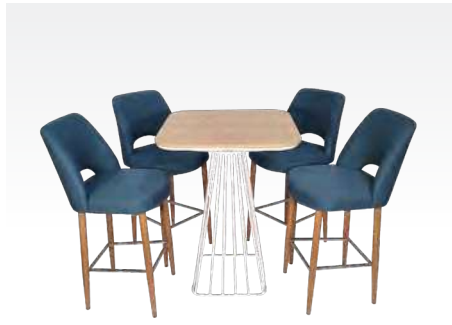
NEW

Gilberton Bar package

\$600 (normally \$750)

Code: TB2832PK

Colour Options Available



Wistow Stool Package

\$600 (normally \$750)

Code: ST0564PK

Colour Options Available



Penfield Stool Package

\$460 (normally \$575)

Code: ST0563PK



Cleland Lounge Chair Package

\$785 (normally \$980)

Code: CH0160PK

Colour Options Available



Cleland Lounge Package

\$710 (normally \$890)

Code: LG0161PK

Colour Options Available



Seaford Chair Package

\$415 (normally \$520)

Code: CH0605PK

Colour Options Available

*Prices exclude GST, damage waiver, delivery or collection, and are for the duration of the exhibition, not exceeding 10 days, general hire not exceeding 7 days. Items are subject to availability. Adelaide Expo Hire reserves the right to change prices or our terms and conditions at any time. www.aeh.com.au

Lounges & ottomans



Cleland 3 Seater Lounge Grey
\$450
 1750(w) x 900(d) x 810mm(h)
 Code: LG0161GY



Cleland 3 Seater Lounge Yellow
\$450
 1750(w) x 900(d) x 810mm(h)
 Code: LG0161YE



Cleland 3 Seater Lounge Blue
\$450
 1750(w) x 900(d) x 810mm(h)
 Code: LG0161BL



Parawa 2 Seater Lounge Grey
\$450
 1820(w) x 890(d) x 720mm(h)
 Code: LG0168GY



Marleston 3 Seater Lounge
\$420
 2000(w) x 845(d) x 810mm(h)
 Code: LG0169GY



Marleston 3 Seater Lounge
\$420
 2000(w) x 845(d) x 810mm(h)
 Code: LG0169GR



Marleston 3 Seater Lounge
\$420
 2000(w) x 845(d) x 810mm(h)
 Code: LG0169BL



Parawa 2 Seater Lounge Charcoal
\$450
 1820(w) x 890(d) x 720mm(h)
 Code: LG0168CH



Millswood Arm Chair
\$275
 750(w) x 730(d) x 750mm(h)
 Code: CH0143CR



Normanville 2 Seater Lounge Dark Grey
\$420
 1570(w) x 880(d) x 770mm(h)
 Code: LG0164DG



Normanville 2 Seater Lounge Grey
\$420
 1570(w) x 880(d) x 770mm(h)
 Code: LG0164GY



Normanville 2 Seater Lounge Cream
\$420
 1570(w) x 880(d) x 770mm(h)
 Code: LG0164CR



Normanville Lounge Chair Dark Grey
\$275
 880(w)x810(d)x770mm(h)
 Code: CH0157DG



Normanville Lounge Chair Grey
\$275
 880(w)x810(d)x770mm(h)
 Code: CH0157GY



Normanville Lounge Chair Cream
\$275
 880(w)x810(d)x770mm(h)
 Code: CH0157CR



Cleland Lounge Chair Yellow
\$275
 750(w) x 780(d) x 810mm(h)
 Code: CH0160YE



Cleland Lounge Chair Blue
\$275
 750(w) x 780(d) x 810mm(h)
 Code: CH0160BL



Cleland Lounge Chair Grey
\$275
 750(w) x 780(d) x 810mm(h)
 Code: CH0160GY



Parawa Lounge Chair Grey
\$275
 790(w) x 890(d) x 720mm(h)
 Code: CH0141GY



Parawa Lounge Chair Charcoal
\$275
 790(w) x 890(d) x 720mm(h)
 Code: CH0141CH

Lounges & ottomans



**Paradise Ottoman
Oval Grey \$135**
600(w)x600(d)x440mm(h)
Code: LG0196GY



**Paradise Ottoman
Oval Blue \$135**
600(w)x600(d)x440mm(h)
Code: LG0196BL



**Paradise Ottoman
Round Grey \$135**
530(w)x530(d)x400mm(h)
Code: LG0194GY



**Paradise Ottoman
Round Blue \$135**
530(w)x530(d)x400mm(h)
Code: LG0194BL



**Paradise Ottoman
Round Yellow \$135**
530(w)x530(d)x400mm(h)
Code: LG0194YE



**Paradise Ottoman
Round Rose \$135**
530(w)x530(d)x400mm(h)
Code: LG0194RO



**Paradise Ottoman
Oval Yellow \$135**
600(w)x600(d)x440mm(h)
Code: LG0196YE



**Paradise Ottoman
Oval Rose \$135**
600(w)x600(d)x440mm(h)
Code: LG0196RO



**Barmera Bench
Seat Grey \$215**
1100(w)x500(d)x460mm(h)
Code: LG0195GY



**Barmera Bench
Seat Blue \$215**
1100(w)x500(d)x460mm(h)
Code: LG0195BL



**Barmera Bench
Seat Yellow \$215**
1100(w)x500(d)x460mm(h)
Code: LG0195YE



**Barmera Bench
Seat Rose \$215**
1100(w)x500(d)x460mm(h)
Code: LG0195RO



**Summertown
Ottoman Rose \$145**
400(w)x400(d)x450mm(h)
Code: LG0197RO



**Summertown
Ottoman Yellow \$145**
400(w)x400(d)x450mm(h)
Code: LG0197YE



**Summertown
Ottoman Grey \$145**
400(w)x400(d)x450mm(h)
Code: LG0197GY



**Summertown
Bench Seat Rose \$225**
1200(w)x400(d)x450mm(h)
Code: LG0198RO



**Summertown
Bench Seat Yellow \$225**
1200(w)x400(d)x450mm(h)
Code: LG0198YE



**Summertown
Bench Seat Grey \$225**
1200(w)x400(d)x450mm(h)
Code: LG0198GY



**Alberton Ottoman
Cube \$105**
460(w) x 460(d) x
450mm(h)
Code: LG0175CH



**Alberton Ottoman
Cube \$105**
460(w) x 460(d) x
450mm(h)
Code: LG0175BK



**Alberton Ottoman
Cube \$105**
400(w) x 400(d) x
380mm(h)
Code: LG0175WH



**Alberton Ottoman
Round \$105**
460(w) x 460(d) x
450mm(h)
Code: LG0177BK



**Alberton Ottoman
Round \$105**
460(w) x 460(d) x
450mm(h)
Code: LG0177CH



**Alberton Bench
Seat \$205**
1500(w) x 460(d) x
450mm(h)
Code: LG0170CH



**Alberton Bench
Seat \$205**
1200(w) x 440(d) x
430mm(h)
Code: LG0170WH

Chairs & stools



Stansbury Lounge Chair \$250
620(w) x 700(d) x 790mm(h)
Code: CH0140CR



Monarto Chair \$95
670(w) x 640(d) x 800mm(h)
Code: CH0608TI



Seaford Chair \$125
480(w) x 570(d) x 820mm(h)
Code: CH0605GY



Edinburgh Chair \$62
410(w) x 450(d) x 790mm(h)
Code: CH0515WH



Edinburgh Chair \$62
410(w) x 450(d) x 790mm(h)
Code: CH0515BK



Edinburgh Chair \$62
410(w) x 450(d) x 790mm(h)
Code: CH0515SA



Penneshaw Chair \$135
500(w) x 500(d) x 780mm(h)
Code: CH0506CR



Ridgehaven Chair \$135
550(w) x 600(d) x 780mm(h)
Code: CH0507CR



Erindale Chair \$67
350(w) x 400(d) x 800mm(h)
Code: CH0516WH



Erindale Chair \$67
350(w) x 400(d) x 800mm(h)
Code: CH0516BK



Erindale Chair \$67
350(w) x 400(d) x 800mm(h)
Code: CH0516SA



Erindale Chair \$67
350(w) x 400(d) x 800mm(h)
Code: CH0516BE



Woodside Armchair \$185
560(w) x 540(d) x 760mm(h)
Code: CH0139GR



Woodside Armchair \$185
560(w) x 540(d) x 760mm(h)
Code: CH0139GY



Woodside Armchair \$185
560(w) x 540(d) x 760mm(h)
Code: CH0139CO



Woodside Armchair \$185
560(w) x 540(d) x 760mm(h)
Code: CH0139BL



Moana Lounge Chair \$200
570(w) x 610(d) x 740mm(h)
Code: CH0148CH



Maslin Chair \$230
670(w) x 740(d) x 930mm(h)
Code: CH0147CH



Mylor Chair \$195
600(w) x 530(d) x 780mm(h)
Code: CH0135GR



Mylor Chair \$195
600(w) x 530(d) x 780mm(h)
Code: CH0135GY



Mylor Chair \$195
600(w) x 530(d) x 780mm(h)
Code: CH0135RU



Mylor Chair \$195
600(w) x 530(d) x 780mm(h)
Code: CH0135BL



Noarlunga Chair \$67
490(w) x 530(d) x 820mm(h)
Code: CH0510WH



Ascot Park Chair \$55
480(w) x 510(d) x 810mm(h)
Code: CH0556BK



Highgate Chair \$70
470(w) x 530(d) x 790mm(h)
Code: CH0501RE



Highgate Chair \$70
470(w) x 530(d) x 790mm(h)
Code: CH0501GR



Highgate Chair \$70
470(w) x 530(d) x 790mm(h)
Code: CH0501BL



Highgate Chair \$70
470(w) x 530(d) x 790mm(h)
Code: CH0501BK



Highgate Chair \$70
470(w) x 530(d) x 790mm(h)
Code: CH0501WH

Chairs & stools



Penneshaw Stool
\$135
530(w) x 560(d) x
800mm(h)
Code: ST0585CR



Ridgehaven Stool
\$135
550(w) x 600(d) x
1050mm(h)
Code: ST0588CR



Wistow Fabric Stool
\$130
460(w) x 520(d) x 1100mm(h)
Code: ST0564GY



Wistow Fabric Stool
\$130
460(w) x 520(d) x 1100mm(h)
Code: ST0564TE



Wistow Fabric Stool
\$130
460(w) x 520(d) x 1100mm(h)
Code: ST0564ST



Wistow Fabric Stool
\$130
460(w) x 520(d) x 1100mm(h)
Code: ST0564DE



Somerton Park Stool
\$130
440(w) x 470(d) x 110mm(h)
Code: ST0595YE



Somerton Park Stool
\$130
440(w) x 470(d) x 110mm(h)
Code: ST0595BK



Somerton Park Stool
\$130
440(w) x 470(d) x 110mm(h)
Code: ST0595WH



Tranmere Stool
\$105
400(w) x 500(d) x 1000mm(h)
Code: ST0571BK



Tranmere Stool
\$105
400(w) x 500(d) x 1000mm(h)
Code: ST0571WH



Tranmere Stool
\$105
400(w) x 500(d) x 1000mm(h)
Code: ST0571GY



Clare Stool
\$130
540(w) x 495(d) x 1070mm(h)
Code: ST0615BL



Clare Stool
\$130
540(w) x 495(d) x 1070mm(h)
Code: ST0615GR



Highgate Stool
\$100
510(w) x 550(d) x 1090mm(h)
Code: ST0569WH



Highgate Stool
\$100
510(w) x 550(d) x 1090mm(h)
Code: ST0569BK



Hawthorn Stool
\$105
390(w) x 380(d) x 870mm(h)
Code: ST0573WH



Hectorville Stool
\$130
460(w) x 440(d) x
1040mm(h)
Code: ST0601CR



Mallala Stool
\$130
440(w) x 400(d) x
1060mm(h)
Code: ST0566OR



Penfield Industrial Bar Stool
\$100
320(w) x 320(d) x 750mm(h)
Code: ST0563TI



Reynella Stool **\$100**
400(w) x 340(d) x 750mm(h)
Code: ST0572TI



Forestville Drafting Stool
\$150
460(w) x 530(d) x 1050mm(h)
Code: ST0580BK



Athelstone Boardroom Chair
\$130
630(w) x 700(d) x 1030mm(h)
Code: CH0522BK



Joslin Chair
\$80
490(w) x 540(d) x 960mm(h)
Code: CH0526BK



*Prices exclude GST, damage waiver, delivery or collection, and are for the duration of the exhibition, not exceeding 10 days, general hire not exceeding 7 days. Items are subject to availability. Adelaide Expo Hire reserves the right to change prices or our terms and conditions at any time. www.aeh.com.au

Tables



Nairne Bar Table \$175
800(w) x 800(d) x 1070mm(h)
Code: TB2873WB



Nairne Bar Table \$175
800(w) x 800(d) x 1070mm(h)
Code: TB2873BB



Uraidla Bar Table \$175
800(w) x 800(d) x 1070mm(h)
Code: TB2870WB



Uraidla Bar Table \$175
800(w) x 800(d) x 1070mm(h)
Code: TB2870BB



Myponga Bar Table \$200
600(w) x 600(d) x 1120mm(h)
Code: TB2824BK



Myponga Bar Table \$200
600(w) x 600(d) x 1120mm(h)
Code: TB2824WH



Gilberton Bar Table Large \$260
1800(w) x 760(d) x 1070mm(h)
Code: TB2831BW
Small \$210
1200(w) x 760(d) x 1070mm(h)
Code: TB2832BW



Gilberton Bar Table Large \$260
1800(w) x 760(d) x 1070mm(h)
Code: TB2831BB
Small \$210
1200(w) x 760(d) x 1070mm(h)
Code: TB2832BB



Gilberton Bar Table Large \$260
1800(w) x 760(d) x 1070mm(h)
Code: TB2831TB
Small \$210
1200(w) x 760(d) x 1070mm(h)
Code: TB2832TB



Findon Bar Table \$150
600(w) x 600(d) x 1100mm(h)
Code: TB2822WH



Findon Bar Table \$150
600(w) x 600(d) x 1100mm(h)
Code: TB2822BK



Balaklava Bar Table \$250
1425(w) x 725(d) x 1100mm(h)
Code: TB2843TB



Gilberton Bar Table Large \$260
1800(w) x 760(d) x 1070mm(h)
Code: TB2831WS
Small \$210
1200(w) x 760(d) x 1070mm(h)
Code: TB2832WS



Gilberton Bar Table Large \$260
1800(w) x 760(d) x 1070mm(h)
Code: TB2831BS
Small \$210
1200(w) x 760(d) x 1070mm(h)
Code: TB2832BS



Gilberton Bar Table Large \$260
1800(w) x 760(d) x 1070mm(h)
Code: TB2831TS
Small \$210
1200(w) x 760(d) x 1070mm(h)
Code: TB2832TS



Gilberton Bar Table Large \$260
1800(w) x 760(d) x 1070mm(h)
Code: TB2831WW
Small \$210
1200(w) x 760(d) x 1070mm(h)
Code: TB2832WW



Gilberton Bar Table Large \$260
1800(w) x 760(d) x 1070mm(h)
Code: TB2831WB
Small \$210
1200(w) x 760(d) x 1070mm(h)
Code: TB2832WB



Gilberton Bar Table Large \$260
1800(w) x 760(d) x 1070mm(h)
Code: TB2831TW
Small \$210
1200(w) x 760(d) x 1070mm(h)
Code: TB2832TW



Dublin Bar Table \$220
1500(w) x 800(d) x 1080mm(h)
Code: TB2826WH



Penola Wine Barrel \$120
850(w) x 1060mm(h)
Code: DE3580TI



Houghton Bar Table \$135
800(w) x 800(d) x 1080mm(h)
Code: TB2835BL



Houghton Bar Table \$135
800(w) x 800(d) x 1080mm(h)
Code: TB2835WH



Houghton Bar Table \$135
800(w) x 800(d) x 1080mm(h)
Code: TB2835BK



Houghton Bar Table \$135
800(w) x 800(d) x 1080mm(h)
Code: TB2835RE



Maitland Bar Table \$135
700(w) x 700(d) x 1080mm(h)
Code: TB2833WH



Maitland Bar Table \$135
700(w) x 700(d) x 1080mm(h)
Code: TB2833BK



Maitland Bar Table \$135
700(w) x 700(d) x 1080mm(h)
Code: TB2833WS

Tables



Tusmore Bar Table \$230
770(w) x 770(d) x 1040mm(h)
Code: TB2844WW



Tusmore Bar Table \$230
770(w) x 770(d) x 1040mm(h)
Code: TB2844TW



Tusmore Bar Table \$230
770(w) x 770(d) x 1040mm(h)
Code: TB2844BW



Tusmore Bar Table \$230
770(w) x 770(d) x 1040mm(h)
Code: TB2844WB



Tusmore Bar Table \$230
770(w) x 770(d) x 1040mm(h)
Code: TB2844TB



Tusmore Bar Table \$230
770(w) x 770(d) x 1040mm(h)
Code: TB2844BB



Tusmore Café Table \$200
770(w) x 770(d) x 740mm(h)
Code: TB2845WW



Tusmore Café Table \$200
770(w) x 770(d) x 740mm(h)
Code: TB2845TW



Tusmore Café Table \$200
770(w) x 770(d) x 740mm(h)
Code: TB2845BW



Tusmore Café Table \$200
770(w) x 770(d) x 740mm(h)
Code: TB2845WB



Tusmore Café Table \$200
770(w) x 770(d) x 740mm(h)
Code: TB2845TB



Tusmore Café Table \$200
770(w) x 770(d) x 740mm(h)
Code: TB2845BB



Houghton Café Table \$130
800(w) x 800(d) x 740mm(h)
Code: TB2834WH



Houghton Café Table \$130
800(w) x 800(d) x 740mm(h)
Code: TB2834BK



Houghton Café Table \$130
800(w) x 800(d) x 740mm(h)
Code: TB2834RE



Houghton Café Table \$130
800(w) x 800(d) x 740mm(h)
Code: TB2834BL



Findon Café Table \$145
600(w) x 600(d) x 750mm(h)
Code: TB2823WH



Findon Café Table \$145
600(w) x 600(d) x 750mm(h)
Code: TB2823BK



Maitland Café Table \$130
700(w) x 700(d) x 720mm(h)
Code: TB2829BK



Maitland Café Table \$130
700(w) x 700(d) x 720mm(h)
Code: TB2829WH



Maitland Café Table \$130
700(w) x 700(d) x 720mm(h)
Code: TB2829WS



Balaklava Dining Table \$300
1800(w) x 735(d) x 745mm(h)
Code: TB2842TB



Burton Café Table \$180
700(w) x 700(d) x 740mm(h)
Code: TB2820WH



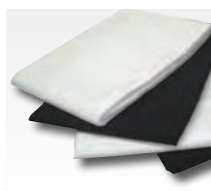
Burton Dining Table \$300
1600(w) x 700(d) x 740mm(h)
Code: TB2821WH



Oakden Café Table Large \$130
1500(w) x 750(d) x 750mm(h)
Code: TB2828WH
Small \$110
1200(w) x 750(d) x 750mm(h)
Code: TB2827WH



Broadview Plastic Trestle Table \$45
1830(w) x 750(d) x 735mm(h)
Code: TB2856GY



Tablecloth All Sizes \$57 (sale item)
Small 1370 x 2280mm
Large 1370 x 3050mm
S ■ Code: TCBK18
L ■ Code: TCBK24
S □ Code: TCWH18
L □ Code: TCWH24

*Prices exclude GST, damage waiver, delivery or collection, and are for the duration of the exhibition, not exceeding 10 days, general hire not exceeding 7 days. Items are subject to availability. Adelaide Expo Hire reserves the right to change prices or our terms and conditions at any time. www.aeh.com.au

Tables



Kingswood Coffee Table Small \$150
500(w) x 500(d) x 520mm(h)
Code: TB2804WH



Kingswood Coffee Table Large \$170
800(w) x 800(d) x 400mm(h)
Code: TB2805WH



Mitcham Coffee Table \$150
600(w) x 600(d) x 340mm(h)
Code: TB2813TI



Mitcham Charging Coffee Table \$275
600(w) x 600(d) x 340mm(h)
Code: TB2813TC



Glengowrie Coffee Table Small \$155
500(w) x 500(d) x 570mm(h)
Code: TB2802WH



Glengowrie Coffee Table Large \$175
860(w) x 860(d) x 370mm(h)
Code: TB2803WH



Ethelton Coffee Table \$140
820(w) x 820(d) x 410mm(h)
Code: TB2817TI



Kingscote Rectangle Coffee Table \$125
900(w) x 450(d) x 430mm(h)
Code: TB2809BK



Kingscote Rectangle Coffee Table \$125
900(w) x 450(d) x 430mm(h)
Code: TB2809WH



Skye Coffee Table \$125
650(w) x 650(d) x 450mm(h)
Code: TB2815BK



Skye Coffee Table \$125
650(w) x 650(d) x 450mm(h)
Code: TB2815WH



Woodcroft Coffee Tables (set of 2) \$245
Small - 600(d) x 260mm(h)
Large - 800(d) x 360mm(h)
Code: TB2801BK



Tusmore Coffee Table \$140
520(d) x 480mm(h)
Code: TB2818WW



Tusmore Coffee Table \$140
520(d) x 480mm(h)
Code: TB2818TW



Kilburn Coffee Table \$160
700(w) x 700(d) x 350mm(h)
Code: TB2819BK



Counters & feature counters



Inman Valley Counter \$775
1430(w) x 675(d) x 1030mm(h)
Code: CT0865WH
Add signage: Front \$200
1255(w) x 700mm(h)



Burra Counter \$650
1070(w) x 580(d) x 1040mm(h)
Code: CT0851WH
Add signage: Front fabric backlit graphic \$240
937(w) x 890mm(h)



Hewett Counter \$750
1425(w) x 530(d) x 1120mm(h)
Code: CT0853WH
Add signage: Front \$80
825(w) x 347mm(h)



Marrabel Counter \$775
1625(w) x 500(d) x 1000mm(h)
Code: CT0857WH
Add signage: Front \$220
1608(w) x 917mm(h)



Kent Town Counter \$800
1980(w) x 500(d) x 985mm(h)
Code: CT0866WH
Add signage: Front \$250
1852(w) x 860mm(h)



Lochiel Counter \$720
1425(w) x 530(d) x 1000mm(h)
Code: CT0855BK
Add signage: Front edgelit graphic \$180
1090(w) x 815mm(h)



Lochiel Counter \$720
1425(w) x 530(d) x 1000mm(h)
Code: CT0855WH
Add signage: Front edgelit graphic \$180
1090(w) x 815mm(h)



Lightsview Counter \$800
2020(w)x550(d)x1040mm(h)
Code: CT0854WH
Add signage: Front \$310
2150(w) x 1000mm(h)
Add signage: Front & Base \$540



Stepney Counter \$750
1970(w) x 570(d) x 1020mm(h)
Code: CT0858TI
Add signage: Front \$290
1975(w) x 1000mm(h)



Welland Counter \$450
1000(w) x 545(d) x 1020mm(h)
Code: CT0850WH
Add signage: Front \$180
940(w) x 900mm(h)



Beaumont Counter \$325
1010(w)x510(d)x1070mm(h)
Lockable with top cable entry & shelf.
Code: CT0835BL
Front signage: \$160
Front 970(w) x 920mm(h)



Beaumont Counter \$325
1010(w)x510(d)x1070mm(h)
Lockable with top cable entry & shelf.
Code: CT0835BK
Add signage: Front \$160
Front 970(w) x 920mm(h)



Beaumont Counter \$325
1010(w)x510(d)x1070mm(h)
Lockable with top cable entry & shelf.
Code: CT0835WH
Front signage: \$160
Front 970(w) x 920mm(h)



Beaumont Counter Backlit \$340
1010(w)x510(d)x1070mm(h)
Lockable with top cable entry & shelf.
Code: CT0835BB
Front signage: \$180
Front 970(w) x 920mm(h)



Beaumont Counter Backlit \$340
1010(w)x510(d)x1070mm(h)
Lockable with top cable entry & shelf.
Code: CT0835WB
Front signage: \$180
Front 970(w) x 920mm(h)



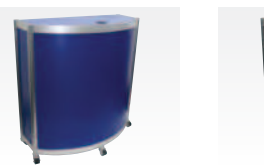
Stirling Counter \$285
1010(w)x510(d)x870mm(h)
Lockable with interior shelf.
Code: CT0817BK
Front signage: \$130
970(w) x 720mm(h)



Beaumont Counter Charging \$380
1010(w)x510(d)x1070mm(h)
Lockable with top cable entry & shelf.
Code: CT0835BC
Add signage: Front \$160
Front 970(w) x 920mm(h)



Beaumont Counter Charging \$380
1010(w)x510(d)x1070mm(h)
Lockable with top cable entry & shelf.
Code: CT0835WC
Front signage: \$160
970(w) x 920mm(h)



Burnside Counter \$325
1010(w)x470(d)x1070mm(h)
Internal shelf, with open back & top cable entry.
Code: CT0846BL
Front signage: \$190
Front 1075(w) x 920mm(h)



Burnside Counter \$325
1010(w)x470(d)x1070mm(h)
Internal shelf, with open back & top cable entry.
Code: CT0846BK
Front signage: \$190
Front 1075(w) x 920mm(h)



Burnside Counter \$325
1010(w)x470(d)x1070mm(h)
Internal shelf, with open back & top cable entry.
Code: CT0846WH
Front signage: \$190
Front 1075(w) x 920mm(h)



Stirling Counter \$285
1010(w)x510(d)x870mm(h)
Lockable with interior shelf.
Code: CT0816WH
Front signage: \$130
970(w) x 720mm(h)



Riverton Counter \$325
1075(w)x580(d)x1360mm(h)
Shelf at rear, open back.
Code: CT0860BK
Add signage: Front \$160
970(w) x 875mm(h)



Riverton Counter \$325
1075(w)x580(d)x1360mm(h)
Shelf at rear, open back.
Code: CT0860WH
Add signage: Front \$160
970(w) x 875mm(h)



Norwood Counter \$325
1145(w)x730(d)x1080mm(h)
Lockable with a backlit or non backlit front.
Code: CT0895BK
Backlit signage: \$200
Front 1020(w) x 920mm(h)



Norwood Counter with Hutch \$325
1145(w)x730(d)x1200mm(h)
Lockable with a backlit or non backlit front.
Code: CT0896BK
Backlit signage: \$200
Front 1020(w) x 920mm(h)

*Prices exclude GST, damage waiver, delivery or collection, and are for the duration of the exhibition, not exceeding 10 days, general hire not exceeding 7 days. Items are subject to availability. Adelaide Expo Hire reserves the right to change prices or our terms and conditions at any time. www.aeh.com.au

Accessories



Various cushions \$35
450(w) x 450mm(h)
Code: DE0200VA



Small Desktop Plant \$20
Artificial plant in white ceramic pot.
150(d) x 250mm(h)
Code: DE0230WH



Cowell Rubbish Bin \$20
280(w) x 280(d) x 450mm(h)
Code: DE3584WH



Hawker Glass Bar Fridge \$380
600(w) x 500(d) x 880mm(h)
Code: DE3515SI



Wallaroo Bar Fridge \$165
520(w) x 550(d) x 835mm(h)
Code: DE3517SI



Willunga 220L Fridge \$250
540(w) x 600(d) x 1400mm(h)
Code: DE3516WH



Various rugs \$200
1800(w) x 1330mm(h)
Code: DE0235VA



Bridgewater Tensa Barrier \$85
Includes 1 post and strap.
Post 320(w) x 320(d) x 700mm(h)
Black Strap 1700mm(w)
Code: DE3521BK



Hilton Mirror \$80
370(w) x 500(d) x 1500mm(h)
Code: DE3548BK



Seacliff Clothes Rack \$100
Standard: 1280(w) x 600(d) x 1440mm(h)
Extended: 1890(w) x 600(d) x 1680mm(h)
Code: DE1617SI



Evanston Clothes Rack \$100
1280(w) x 600(d) x 1440mm(h)
Extended: 1890(w) x 600(d) x 1680mm(h)
Code: DE1615SI



Minlaton Lanyard Stand \$100
420(w) x 420(d) x 1800mm(h)
Code: DE1618TI



Display solutions



Magill Mushroom Display \$425

900(w) x 900(d) x 270mm(h)
Base 600(w) x 600(d) x 600mm(h)
Illuminated, lockable base storage.
Code: GD1834GY



Magill Tower Display \$450

600(w) x 600(d) x 2000mm(h)
Illuminated, lockable base storage.
Three complete shelves.
Code: GD1845GY



Magill Window Display \$450

1010(w) x 460(d) x 2000mm(h)
Illuminated, lockable base storage. Three complete shelves. Code:GD1846GY Code: GD1846WH



Magill 1/2 Glass Display \$425

1200(w) x 450(d) x 950mm(h)
Illuminated, lockable base storage. Interior shelf.
1050(w) x 300mm(d)
Code: GD1838GY



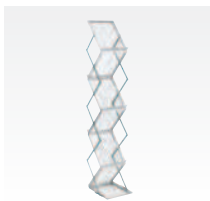
Magill 3/4 Glass Display \$425

1200(w) x 450(d) x 950mm(h)
Illuminated, lockable base.
Code: GD1839GY



Unley Ladder Storage Unit \$190

800(w) x 345(d) x 1450mm(h)
Code: DE1606TI



Wayville Pop Up Brochure Stand \$150

290(w)x410(d) x1370mm(h)
Holds A4
Code: DE1609CL



Wayville Pop Up Brochure Stand \$150

290(w)x410(d) x1370mm(h)
Holds A4
Code: DE1609BK



Marion Brochure Stand \$140

275(w) x 275(d) x 1200mm(h)
Holds A4
Code: DE1611BK



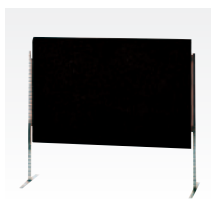
Fulham Wall Shelves Sloped (Set of 4) \$220

Corinthian / Galaxy
 Code: DE2470PK



Fulham Wall Shelves Sloped (Set of 4) \$220

Octanorm
 Code: DE2485PK



Medium Cowandilla Horizontal Posterboard \$105

1800(w) x 1200mm(h)
Velcro attachable only.
Code: DE2206BK



Large Cowandilla Horizontal Posterboard \$110

2400(w) x 1200mm(h)
Velcro attachable only.
Code: DE2207BK



Wingfield Slat Wall \$310

Corinthian 1000(w) x 2400mm(h)
Code: DE5010GY
(No hooks provided).



Wingfield Slat Wall \$310

Octanorm 1000(w) x 2400mm(h)
Code: DE5009GY
(No hooks provided).



Fulham Wall Shelves Flat (Set of 4) \$220

Corinthian / Galaxy
 Code: DE2470PK



Fulham Wall Shelves Flat (Set of 4) \$220

Octanorm
 Code: DE2485PK



Cowandilla Vertical Posterboard \$90

1200(w) x 1800mm(h)
Velcro attachable only.
Code: DE2203BK



Dulwich Square Display Plinth \$110

480(w) x 480(d) x 800mm(h)
Code: PL1746BK



Dulwich Square Display Plinth \$110

480(w) x 480(d) x 800mm(h)
Code: PL1746WH



Dulwich Square Display Plinth \$120

480(w) x 480(d) x 1000mm(h)
Code: PL1747BK



Dulwich Square Display Plinth \$120

480(w) x 480(d) x 1000mm(h)
Code: PL1747WH



Medindie Unveiling Stand \$220

900(w) x 500(d) x 2000mm(h)
Velcro compatible with detachable shelf.
Code: DE3597SI



Osborne Brochure Holder A4 \$30

Wall mountable with velcro.
Code: DE1600CL



Osborne Brochure Holder Desk stand A4 \$35

Desk stand is not mounted to wall.
Code: DE1601CL



Osborne Brochure Holder A5 \$35

Desk stand or wall mountable with velcro.
Code: DE1604CL



Osborne Brochure Holder DL \$35

Desk stand or wall mountable with velcro.
Code: DE1603CL



Heathfield Metal Plinth White \$135

410(w) x 410(d) x 1000mm(h)
Code: PL1760WH



Heathfield Metal Plinth Black \$135

410(w) x 410(d) x 1000mm(h)
Code: PL1760BK

Directional signage



St Morris Curved Sign \$190

1030(w) x 500(d)
x 2030mm(h)
Code: DE1670SI

Add single sided signage for \$310

Graphic size:
1075(w) x 1880mm(h)



St Morris Flat Sign \$190

1030(w) x 500(d)
x 2030mm(h)
Code: DE1665SI

Add single sided signage for \$300

Graphic size:
970(w) x 1880mm(h)



Eco Board Sign Single sided \$345

1080(w) x 500(d) x
1900mm(h)

Double sided signage for \$540



Glenelg Timber Easel \$90

600(w) x 1250mm(h)
Code: DE1605TI

Add single sided signage for \$85

Graphic size:
475(w) x 675mm(h)



Frewville A-Frame Sign \$90

640(w) x 740(d)
x 970mm(h)
Code: DE1620SI

Add single sided signage for \$110

Graphic size:
595(w) x 900mm(h)



Smithfield Pull Up Banner \$220

Complete with a padded carry bag, price includes the print.
Base Unit:

880(w)x380(d)x2100mm(h)
Code: DE9356SI

Sale item only.

Artwork Specifications

Graphic size:
850(w) x 2000mm(h)



Netley A1 Sign \$130

630(w) x 470(d)
x 1910mm(h)
Code: DE1622SI

Add single sided signage for \$100

Graphic size:
595(w) x 840mm(h)



Netley A3 Sign \$90

500(w) x 230(d) x
1170mm(h)
Code: DE1625SI

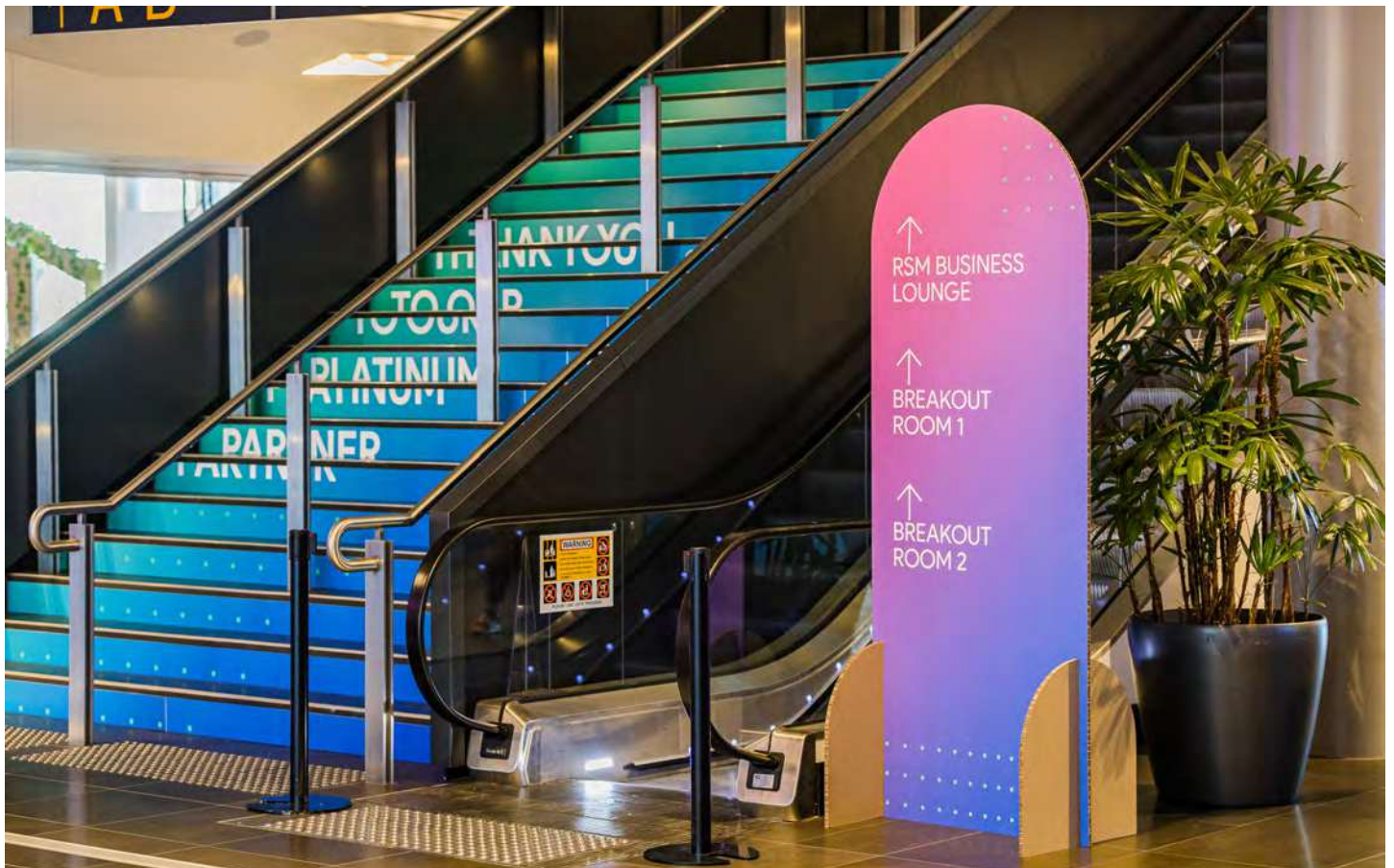
Add single sided signage \$70

Graphic Size:
297(w) x 420mm(h)



Eco Board (cardboard) Activations

Please liaise with your coordinator to discuss your requirements. POA



Audio visual

Prices include standard set up and dismantle of equipment. Should you require technical operators for the equipment on your stand please speak to your exhibition coordinator.

Technical support out of hours, or out of pre-agreed exhibitor move in times will incur charges, prices quoted on application

All LCD screens are compatible with Desk Stand, 2 metre Tri Truss Stand and most are wall mountable. A 2m Tri Truss Stand or Desk Stand is included in the display hire price and are not available separately. Wall mounting \$200 +GST

LCD Screens (With Audio)

Size	1 Day Hire	2 Day Hire	3 Day Hire	4 - 7 Day Hire
32" LCD TV Screen	\$400	\$500	\$600	\$650
42" LCD TV Screen	\$500	\$700	\$850	\$950
58" LCD TV Screen	\$600	\$900	\$1050	\$1200
70" LCD TV Screen	\$650	\$975	\$1150	\$1350
75" LCD TV Screen	\$700	\$1050	\$1250	\$1500
82" LCD TV Screen	\$800	\$1200	\$1400	\$1700

Touch Screen (With Audio)

Size	1 Day Hire	2 Day Hire	3 Day Hire	4 - 7 Day Hire
55" Touch Screen Panel	\$650	\$975	\$1150	\$1350
32" Freestanding Touch	\$500	\$700	\$850	\$950

LED Seamless Wall (Indoor Screen)

Size	1 Day Hire	2 Day Hire	3 Day Hire	4 - 7 Day Hire
3.9mm LED Seamless Wall	\$POA	\$POA	\$POA	\$POA

Laptops and iPads

Size	1 Day Hire	2 Day Hire	3 Day Hire	4 - 7 Day Hire
iPad Air	\$ \$100	\$150	\$200	\$250
Mac Laptop	\$250	\$350	\$450	\$550
Windows Laptop	\$200	\$300	\$400	\$550

Electrical



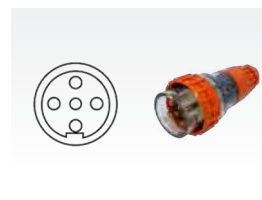
**2.5 Amp
3 pin flat \$150**
Code: EL5015WH



**10 amp
3 pin flat \$185**
Code: EL5014BK



**15 amp
Single phase 3 pin flat
\$230**
Code: EL5016BK
(Note large earth pin)



**32 amp
three phase 5 pin round
\$600**
Code: EL5018OR



**Distribution Board
32 amp 3 phase \$700**
32 amps to 6 x 10 amp outlets
with RCBOs
Code: EL5019GY



**LED Octanorm Arm
Light \$150**
150 watt, 0.63 amp,
240 volt.
Code: EL1913GY



**LED Spotlight
\$130**
120 watt, 0.50 amp,
240 volt.
Code: EL1911BK

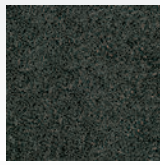
Calculating Amp Draw

Devices use varying quantities of power. Calculate your electrical supply requirements by using the following equation.

Amp = watt divided by volt. * Additional charges may apply at some venues.

Flooring

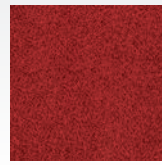
Please liaise with your coordinator to discuss your floor requirements. POA



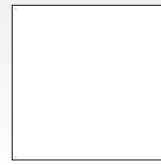
Carpet - Charcoal



Carpet - Blue



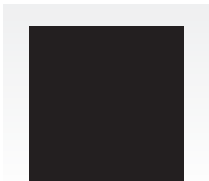
Carpet - Red



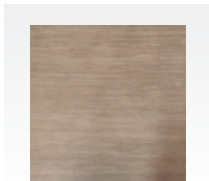
Raised floor - White



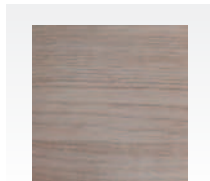
Raised floor - Oak



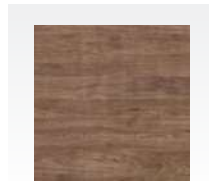
Raised floor - Black



Raised floor - Painted Ash



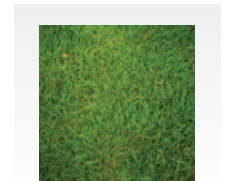
Raised floor - Natural Ash



Raised floor - Teak



Raised floor - Concrete look



Raised floor - Grass

Plants, pots & flowers



Janet Craig
\$95

Other pots available at an extra cost (please see below).
Medium 0.5-1.2m(h)
Large 1.5m(h)



Happy
\$95

Other pots available at an extra cost (please see below).
Medium 0.5-1.2m(h)
Large 1.5m(h)



Kentia
\$95

Other pots available at an extra cost (please see below).
Medium 0.5-1.2m(h)
Large 1.5m(h)



Urban Slimline Planter
\$250

Includes 3 small plants.
Planter size 1000(w) x 320(d) x 600mm(h)
Box Colours ■■■□



Fresh Flowers \$POA

Photo shown is for illustrative purposes only. Actual flowers may differ to the photos shown and are subject to availability.



Quadro Lechuza
\$35

Pot only, plants extra cost.
Colours ■■■□



Classico Lechuza
\$35

Pot only, plants extra cost.
Colours ■■■□



Cubico Lechuza
\$35

Pot only, plants extra cost.
Colours ■■■□

*Being a natural product, plant dimensions may vary. Includes standard pot as shown. Please specify plant name when ordering.

*Plant orders must be placed at least 10 days prior to exhibition installation. Orders placed inside 10 days will be subject to plant supplier availability and late fees.

Terms & conditions

Standard Terms & Conditions Definitions

"Owner" means Adelaide Expo Hire Pty Ltd, ABN 14 062 230 433;
"Hirer" means the person hiring the Equipment from the Owner;
"Equipment" means all properties which the Owner agrees to hire to the Hirer;
"Price" means the price for hiring the Equipment, as shown on the order or subsequently agreed between the Owner and Hirer;
"Claims" means any claim, legal action or liability for damages or compensation; liability to pay any fine or penalty; expenses, including repair and legal costs; consequential losses; and injury, including personal injury and death.

1. Payments

Payment is required in full prior to delivery by EFT, Credit Card, Cash or Cheque. A 1.3%+gst credit card fee will be charged on credit card transactions when using VISA or Mastercard. A 3.0%+gst credit card fee will be charged on credit card transactions when using Diners Club or AMEX.

2. Prices

Exhibitions: Prices are for the duration of the Exhibition not exceeding 10 days.
General Hire: Prices are for a period not exceeding 7 days. Minimum order for general hire is \$750.00+gst (not including delivery or collection) and a damage waiver of 9%+gst.
All transactions are processed in Australian Dollars. Prices do not include gst, damage waiver, delivery or collection. All items are subject to availability. Adelaide Expo Hire reserves the right to change prices or our terms and conditions at any time.

3. Delivery and Collection

An additional charge will be made for delivery and/or collection. The rate is 35%+gst of the hire cost with a minimum charge of \$100.00+gst capped at \$1000.00+gst for the Adelaide Metropolitan Area during normal business hours. Our Business Hours are 8.00am to 5.00pm Monday to Friday excluding public holidays. SPOA for costs outside the Adelaide Metropolitan Area. Adelaide Expo Hire Pty Ltd staff will carry out all deliveries and collection of Equipment, except as agreed in writing. All Equipment must be available for collection immediately after the Exhibition. No responsibility will be taken for any items left in or on our Equipment after close of the Exhibition. The Hirer will bear full responsibility for the Equipment hired from the time of its delivery until collection by or return to the Owner. For "General Hire" after hours delivery and collection rates may apply.

4. Fuel Levy

Where fuel costs increase beyond our reasonable control, we may introduce or vary a fuel levy. Any fuel levy will be clearly identified on invoices and may be adjusted from time to time.

5. Damage Waiver

Damage Waiver is an additional 9%+gst fee payable by the Hirer to cover accidental damage and costs associated with normal wear and tear of the Equipment. It does not cover:
(a) damage resulting from misuse, abuse, or vandalism of Equipment.
(b) damage, disappearance or loss of Equipment from any unknown cause.
(c) damage caused by the use or operation of Equipment in contravention of any conditions of this agreement. All damaged or broken items must be returned to Adelaide Expo Hire Pty Ltd or they will be classed as lost items, which must be paid for.

6. Damage or Loss

The Hirer shall at all times be liable for the loss of, or damage (other than accidental damage which is covered by the damage waiver) to the Owners' hire Equipment from whatever cause, from the time of delivery to when the goods are collected. Any damage must be reported to Adelaide Expo Hire Pty Ltd immediately on (08) 8350 2300.

7. Late Orders

Effective for orders placed inside 7 days of the event and during move in are to be charged an additional late order fee of \$100.00+gst.

8. Cancellations

Refunds do not apply to goods cancelled after delivery. For Adelaide Expo Hire Pty Ltd Equipment a cancellation fee equivalent to 50% of the hire order value shall be made where the cancellation occurs less than 7 days prior to the date of commencement of the hire. For sub contracted Equipment cancellation terms as per sub contractors companies terms and conditions.

9. Covid-19

If a stand, exhibition or event is affected/postponed/cancelled due to COVID-related lockdowns or border closures, we will endeavour to refund costs wherever possible. However, costs already incurred and/or not refundable to AEH, will need to be passed on to the client. Any such charges can be quantified and itemised where required.

10. Debt Collection

Any costs, expenses or disbursements incurred by the supplier in recovering any outstanding monies including debt collection, agency fees and solicitor's costs shall be paid by the Hirer.

11. Other

All items ordered are subject to availability. No responsibility is accepted for non delivery of goods where payment has not been made in advance or made available at the time of delivery. All hire goods remain the property of Adelaide Expo Hire Pty Ltd at all times. Adelaide Expo Hire Pty Ltd retains the right to alter, vary or substitute any item without notice. Adelaide Expo Hire Pty Ltd retains the right to remove goods at any time if the items are being mistreated or not used for the purpose for which they are designed or intended. Additional charges (including labour charges) may apply for delivery outside of normal business hours, on weekends or public holidays, orders received less than 48 hours prior to delivery, delivery outside of the Adelaide Metropolitan Area, for design, consultancy and other similar services provided in connection with the hire of the Equipment for the Hirer's event, if the site is not adequately prepared for delivery and/or installation of the Equipment, if we cannot obtain access to the site, if the Hirer fails to be in attendance at the agreed time for delivery or collection of the Equipment, cleaning the Equipment where it has been returned in an unclean state, for service calls to the site during the hire period, enforcing any provision of the Contract against the Hirer, venues/sites with limited or difficult access, and arising from a variation to the Contract, including without limitation: a change in the type of Equipment required; a change in the position where the Equipment is to be or has been installed upon the site; a change in the location of the site; or a change in the delivery or collection instructions from those first agreed. All prices or price lists published by Adelaide Expo Hire Pty Ltd

may be changed without notice.

Please refer to our full terms and conditions in this catalogue or our website www.aeh.com.au.

Our Business Hours are 8.00am to 5.00pm Monday to Friday.

AEH Warehouse Delivery and Collection times are 8.30am to 4.30pm Monday to Friday.

12. Payment Terms

The Hirer agrees to pay the Owner's hire charge and any other charges, including charges for loss, damage and repairs or any tax, gst, duty, levy, or other expenses paid or payable by the Owner. If not otherwise specified by the Owner in writing all hiring charges including taxes and duties are to be paid prior to delivery of the Equipment. The Hirer agrees to pay any expenses incurred or loss suffered by the Owner as a result of breach of the Hirer of its obligation pursuant to the Terms (including legal costs on a solicitor client basis) and to pay all costs and expenses incurred by the Owner, its legal advisers, mercantile agents and others in respect of anything instituted or being considered against the Hirer, whether for debt, possession of any Equipment or otherwise.

13. Termination of Hire

The Owner at its discretion may notwithstanding the specified period of hire and notwithstanding any waiver of any previous default by the Hirer forthwith terminate this Agreement with or without notice to the Hirer and repossess the Equipment in any of the following events:

- If the Hirer shall fail to pay any hiring charges within two (2) days of the due date for such payment
- If the Hirer shall do or permit any act or thing whereby the Owners' rights in the Equipment are or may be prejudiced
- If the Hirer should become or be made insolvent or bankrupt or make any arrangement or composition with his creditors or in the case of a Hirer being a limited company, should any order be made or resolution be passed for the winding up of such company or an Administrator, Receiver or Manager be appointed.
- If the Hirer commits any breach of the Agreement. For the purposes of repossessing the Equipment, the Owner may enter into or upon any site where the Equipment may be without prejudice to the rights of the Owner to recover from the Hirer any moneys due hereunder or any damages for breach thereof and so far as allowed by law the Hirer indemnifies the Owner in respect of any claims, damages or expenses arising out of any action taken under this clause.

14. Hirer's Obligations

The Hirer will:

- bear responsibility for the Equipment hired from the time of its delivery until collection by or return to the Owner;
- upon installation, delivery or collection of the Equipment immediately examine the Equipment to satisfy itself as to its condition and suitability and fitness for the purpose to which it requires the Equipment. In accepting the Equipment the Hirer acknowledges that it has duly examined the Equipment and has satisfied itself as required. The Hirer acknowledges that it has not in any way relied upon the skill or judgement or any representation made by or on behalf of the Owner in respect of the Equipment, its purpose, suitability or performance. Should the Hirer alter its installation or delivery requirements prior to, during, or after installation or delivery, the Hirer is liable for all extra costs of the Owner's employees and cartage;
- assume the risk of and indemnify and hold the Owner harmless from and against any and all property damage and personal injury resulting from:
 - the use of the Equipment;
 - contact with underground cables, pipes, services or other obstructions;
 - all necessary surface repairs.
- use the Equipment in a proper, safe and prudent manner and only for the purpose and capacity for which it was designed.
- ensure all Equipment is returned or ready for collection by the Owner's driver, in a clean dry and properly packed condition and if collected, is readily accessible. The Hirer will pay for all cleaning and drying costs and for any damage resulting from not properly drying, cleaning and/or packing the Equipment.

15. Loss or Damage of Equipment

If the Equipment is lost, breaks down or is damaged, the Hirer must immediately notify the Owner of the details. Notification shall not absolve the Hirer from its obligations under these terms. In the event that the Equipment breaks down or becomes unsafe to use, the Hirer shall immediately stop using the Equipment and take all necessary steps to prevent the Equipment from sustaining any further damage. The Hirer must also take all steps necessary to prevent injuries from occurring to any person or property as a result of the condition of the Equipment and must not repair or attempt to repair the Equipment without the Owner's prior written consent. If the Equipment is lost or damaged and the loss of or damage to the Equipment is caused by the negligence or wilful act of the Hirer or the breach of any of these terms by the Hirer, the Hirer shall without limitation be liable for the following:

- any costs incurred by the Owner in repairing or replacing the Equipment;
- hire charges for the Equipment until the Equipment is replaced or repaired;
- any other costs whatsoever incurred or loss suffered by the Owner as a result of the damage to or loss of the Equipment.

16. Indemnity

The Hirer hereby releases the Owner from and agrees to indemnify the Owner in respect of any third party claims, action, suits, demands, costs and expenses for damage or injury to person or property arising directly or indirectly out of the hire or use of the Equipment by the Hirer on these terms.

17. Insurance

The Hirer will maintain at its own expense all appropriate policies of insurance:
(a) for theft and damage to the Equipment hired in an amount not less than the full replacement cost of Equipment;
(b) for liability, property and casualty insurance coverage in amounts necessary to fully protect the Owner and its Equipment against all claims, loss or damage whatsoever.

18. Price List

Any prices or price list published by the Owner may be changed without notice.

19. Claims

Any claim relating to the quality of the Equipment or services provided must be made at the time of delivery or during the Exhibition/Event. NO CLAIM will be recognised after the Exhibition/Event closes.



📍 31 Deeds Road, North Plympton, South Australia 5037
☎ +61 8 8350 2300
✉ adexpo@aeh.com.au
🌐 www.aeh.com.au

